

***Seedstock Plus Red Reward
Bull & Female Sale***

November 6, 2021

12 noon

Wheeler Livestock Auction

Osceola, MO

***ALL BULLS & REGISTERED FEMALES SELL
WITH GENOMIC -ENHANCED EPDS! ALL ARE SIRE
VERIFIED, COAT COLOR & POLLED TESTED!***



Seedstock Plus Red Reward Bull & Female Sale

Saturday November 6, 2021 * 12 noon

Wheeler Livestock Auction, Osceola, MO

Driving Directions:

For those of you with a GPS -
the street address is: 685 S MO Hwy 13,
Osceola, MO 64776

Coming from the north, Wheeler Livestock Auction is located 25 miles south of Clinton, MO on Hwy 13. At the intersection where Hwy TT goes east, turn west into the entrance to the parking lot.

Coming from the south, Wheeler Livestock is 32 miles north of Bolivar, MO on Hwy 13. At the intersection where Hwy TT goes east, turn west into the entrance to the parking lot.

Lunch: The Sale Barn cafe will be open on sale day.

Accommodations:

Clinton, MO

Headquarters Hotel: Parkfield Inn
660-890-6188

Hampton Inn
660-885-4488

Bolivar, MO
Bolivar Comfort Inn
417-326-6169

Bolivar Super 8
417-777-8888

Seedstock Plus Customer Service Programs

Guaranteed Sight-Unseen Purchases

Free Delivery on bulls
or \$75 Discount if picked up sale day

Bull Warranty Program

Bulls are guaranteed for Fertility, Structure and Disposition. For an additional 5% of purchase price, bull can be warrantied for injury and death for 6 months.

Marketing Assistance Program

- Feeder Calves
- Replacement Females
- Bred Heifers, Cows and Pairs

If you need additional information on a particular program, call us at the Seedstock Plus office.

Health

Seedstock Plus Bulls have been tested and found negative for PI BVD. We recommend producers purchase only bulls that are negative for Persistent Infected BVD Virus. **Bulls are also tested NEGATIVE for Trichomoniasis.** This is not mandated by every state yet but some states are requiring it and we felt it best to be on top of that. The bulls have been vaccinated and boosted with IBR, BVD, PI-3, BRSV-4, Black-leg & Vibrio Lepto. They have been on a regular de-worming schedule since weaning. All the bulls have passed a breeding soundness exam that includes live semen evaluation, palpation, extension and scrotal measurement. All the necessary health tests have been performed and interstate health papers will be available sale day.

Seedstock Plus Red Reward 'Fall Edition'

Bull & Female Sale

November 6, 2021 * 12 p.m. * Wheeler Livestock Auction, Osceola, MO

Sale Day phone: 417-646-8102

John Burbank cell: 660-734-1165

Matt Burbank cell: 660-734-2739

Byron Wheeler, auctioneer.....417-777-0897

Dennis Bolin, ring service.....417-830-2480

Doug Fager, ring service.....913-645-9497

Selling: 40 - Balancer & Gelbvieh 18 Month Old Bulls

12 Registered Females

17 Commercial Females

About the Bulls:

Prior to delivery to the test, bulls are sorted and culled at home

- Bulls are brought in to be fed together at a Regional Development Center
- Bulls are grown with their longevity in mind - fed for 3# ADG with high roughage ration
- Bulls are culled again prior to catalog for poor gain, conformation, disposition, etc.
- All bulls have passed a thorough breeding soundness exam prior to the sale
- All bulls are tested Negative for BVD -PI3 & Trichomoniasis
- All bulls have Genomically Enhanced EPDs and are SIRE VERIFIED.
- All Gelbvieh & Balancer bulls are Polled and Coat Color tested.
- The bulls are Guaranteed 'Free' of the currently known Genetic Defects we can test for.
- EPDs update weekly so there will be updated EPDs, Tenderness scores, frame scores & scrotal measurements available on a supplement sheet early the week of the sale.
- **EPDs ARE CURRENT AS OF 9/28/2021**

We are planning to video each of the bulls on October 25th - after they have been semen checked and clipped. The videos will be posted during that week and will be available to view by October 30th. If you would like to see a video of a specific bull and have access to high speed internet - you can go to our website or www.dvauction.com and download the videos by the bull's LOT #.

Internet Bidding:

The sale will be available to watch and bid real time at www.dvauction.com

1. Create an account under the 'create new account' tab.
2. Apply for bidding by clicking 'apply for bidding' in the upper left corner of the screen. **AT LEAST 24 HOURS PRIOR TO THE SALE!**
3. Tune in to the sale to make your purchases!

Working Together for Industry Excellence



Seedstock Plus

Seedstock Plus, LLC

John E. Burbank, CEO

18864 Kepler Dr.

St. Catharine, MO 64628

Toll Free: 877-486-1160 or

email: john@seedstockplus.com

www.seedstockplus.com



Industry Commitment

The bulls included in this offering come from producers who are in the Seedstock business for the long haul. They raise the kind of bulls that produce the type of feeder calves that feed well and grade and yield on the rail. These are the kind of bulls that produce the replacement heifers that make our commercial customers so successful. Feel free to contact any of the members listed below if you have questions.

Broken B Ranch

Contact: Chris Bond
Iberia, MO
573-375-0330

Horizon Farms

Contact: Ed Laverentz
Cheney, KS
316-990-5088

Norwood Gelbvieh

Contact: Jerry Norwood
Carthage, MO
417-850-1023

Stuecken Brothers

Contact: Derek Stuecken
Freeburg, MO
573-690-8543

Burbank Cattle Company

Contact: Matt Burbank
St. Catharine, MO
660-734-2739

JGP Gelbvieh

Contact: Josh Phillips
Lathrop, MO
816-914-6053

Pederson Gelbvieh

Contact: David Pederson
Buffalo, MN
320-333-2014

Wannabe Stock Farm

Contact: Gregory Summers
Smithville, MO
816-392-5242

Burns Gelbvieh

Contact: Jesse Burns
Covington, OH
937-606-4861

Kenyon Cattle LLC

Contact: Jack Welle
Milford, IA
712-251-4641

Reinert Family Farm

Contact: John Reinert
Billings, MO
417-224-7204

White Oak Farms

Contact: Myron Bahm
Aurora, MO
417-576-0687

Childs Cattle Company

Contact: Robin Childs
Reeds, MO
417-793-8163

KZ Cattle Company

Contact: Kerry Zillinger
Columbus, KS
785-543-7614

Rex Wood Farms

Contact: Rex Wood
Meadville, MO
660-247-2577

Wolf Gelbvieh

Contact: Travis Wolf
Gothenburg, NE
308-529-3733

Crossfire Ranch

Contact: Leland Burnett
Warsaw, MO
660-723-0574

Lawman Farms

Contact: Kathleen Merritt
Columbia, MO
419-439-3730

Rockin' U Ranch

Contact: Stan Utley
Richmond, MO
816-719-3793

Wonder Creek Gelbvieh

Contact: Dan Snodgrass
Lathrop, MO
816-721-4130

Double V Farms

Contact: Vince Mariani
Warrensburg, MO
660-238-0335

Meng Farms Cattle Co.

Contact: Doug Meng
Troy, KS
913-370-0334

Sanders Farm

Contact: Cody Sanders
Wellsville, KS
785-248-3202

Zimmerman Gelbvieh

Contact: Tyler Zimmerman
Harper, KS
620-243-2876

Duck River Gelbvieh

Contact: David Bates
Duck River, TN
931-209-5053

Miller Gelbvieh & Angus

Contact: Bernard Miller
Cranfills Gap, TX
512-635-4876

Sandy Knoll Farm Gelbvieh

Contact: Brian L Dunn
St. John, KS
620-786-4039

Flint Hills Gelbvieh

Contact: Ronald Schultz
Alma, KS
785-617-0033

Mulroy Farms LLC

Contact: Tim Mulroy
Mayetta, KS
785-640-6401

Simmons Cattle Company

Contact: Robert Simmons
Raymore, MO
816-266-6482

Gatson Gelbvieh

Contact: Adam Gatson
Vandalia, MO
573-721-6482

Narrow Gate Cattle

Contact: Larry Kendall
Fairfax, IA
573-216-9719

Sorrells Gelbvieh Farms

Contact: Scott Sorrells
Petersburg, TN
931-993-9680

Hebron Ranch

Contact: Daniel Bell
Olaton, KY
270-274-1749

Nelson Ranch

Contact: Jerry Nelson
Soldier, KS
785-364-6183

Springhaven Farm LLC

Contact: Ken Anderson
Belton, MO
816-506-7947

About The Catalog:

Color possibilities:

ND Red - Non-diluter red
Red (DC) - known diluter gene carrier

Designates an RFI tested bull. This data is available on page 5 in the catalog

Polled Status:
Polled: Single Polled
Scurred
Homo Polled

Balancer

COLOR

POLLED

540
RFI

PFX NAME

GRAND SIRE

SIRE

GRAND DAM

MAT GRAND SIRE

DAM

MAT GRAND DAM

REG #:	REG #
BD:	B DATE
BW:	BW
WW:	Adj WW

Actual Data:
Registration #
Birthdate
Actual BW
Adjusted WW

EPD'S: All Bulls have an LD Profile and 'Genomic Enhanced EPDs'.

Breed Percentile Ranking: This number corresponds to the EPD directly above it to compare EPDs within breed.

CE	BW	WW	YW	MK	TM	CEM	ST	DOC	CW	REA	MB	\$C	FPI	EPI
BREED PERCENTILE RANKING PER EPD														
Breed %														
OWNER:														

Breed Make-up on Balancer bulls. Abbreviations include: AN = Black Angus AR = Red Angus GV = Gelbvieh XX = unknown

Expected Progeny Differences 'EPD' Definitions

The American Gelbvieh Association transitioned to the BOLT system for EPD calculations in the fall of 2018. The American Angus Association had already been using this system for the past year. There are 12 beef breed Associations in collaboration to form IGS (International Genetic Solutions) which brings a new, streamlined method for incorporating genomic results into the EPDs. This incorporates data and updates EPDs on a weekly basis. EPD Definitions:

CE: Calving Ease – A number that predicts the average difference in ease with which a sire's calves will be born when he is bred to first calf heifers – **higher numbers indicate greater calving-ease.**

BW: Birth Weight, WW: Weaning Weight & YW: Yearling Weight – All are expressed in pounds, this shows the expected number of pounds a bull or female will add or subtract from their progeny's birthweight, weaning weight and yearling weight respectively.

MK: Milk: expressed in pounds of weaning weight that a female will add/subtract or that a bull's daughters will have.

TM: Total Maternal - expresses the combination of what a sire transmits to his daughters in the form of genetics for growth and genetics for milking ability. Or that same trait directly applied to a female and expressed in pounds.

CEM: Calving Ease Maternal: this EPD predicts how well an animal's daughters will calve with a higher number being easier calving.

ST: Stayability: Predicts the genetic difference, in terms of percent probability, that a bull's daughters will stay productive within a herd to at least six year of age.

DOC: is expressed as a difference in yearling cattle temperament, with a higher value indicating more favorable docility. It predicts the average difference of progeny from a sire in comparison with another sire's calves. In herds where temperament problems are not an issue, this expected difference would not be realized.

CW: Carcass Weight: expressed in pounds of carcass weight adjusted to a constant fat endpoint.

REA: Rib Eye Area: expressed in square inches of rib eye muscle area adjusted to a constant fat endpoint.

MB: Marbling: expressed in degrees of marbling score, a determinant of USDA Quality Grade. Value is adjusted to a constant fat endpoint.

\$Cow: Represents the genetic value in dollars of profit of an animal when retained as a replacement female relative to other animals in the herd. A higher number represents more profitable genetics for maternal productivity.

FPI: An economic selection index designed to aid producers in selecting sires whose progeny will perform in the feedlot and are sold on grade and yield.

EPI: An economic selection index developed to aid producers in selecting for more feed efficient cattle that still have acceptable amounts of gain.

\$W: (Weaned Calf Value), (Angus only) an index value expressed in dollars per head, is the expected average difference in future progeny performance for preweaning merit. \$W includes both revenue and cost adjustments associated with differences in birth weight, weaning direct growth, maternal milk and mature cow size

\$F: (Feedlot Value) & \$G (Grid Value) (Angus only) are both an index value expressed in dollars per head, and are the expected average difference in future progeny performance for postweaning merit (\$F) and progeny performance for carcass grid (\$G) compared to progeny of other sires

\$B: (Beef Value), (Angus only) an index value expressed in dollars per head, is the expected average difference in future progeny performance for postweaning and carcass value compared to progeny of other sires

What you need to know about Residual Feed Intake (RFI)....

What is Residual Feed Intake or RFI? Residual Feed Intake or RFI is defined as the difference between an animal's actual feed intake and its expected feed requirements for maintenance and growth. RFI is the variation in feed intake that remains after the requirements for maintenance and growth have been met. Efficient animals eat less than expected and have a negative or low RFI, while less efficient animals eat more than expected and have a positive or high RFI.

How is RFI measured? To accurately measure RFI, you have to weigh and log an individual animal's feed consumption and compare that amount to the animal's expected intake over a standardized test period. The technology to do this accurately is available utilizing the GrowSafe feed system. The system has individual bunks that sit on weigh bars that are configured for only one animal to eat at a time. Feed is available free choice and every animal on test has an EID tag. When an animal's head enters the bunk, it passes a sensor that records that individual EID number and measures the amount of feed consumed by that individual. The sensors and weigh bars are taking second by second readings. This feed intake data is instantly transmitted wirelessly to a dedicated computer and stored in its database. All this data and individual animal information and weights are sent to GrowSafe for analysis.

How is RFI reported? RFI is reported in numerical form plus or minus in pounds of feed. Each group is forced to have an average of zero. The RFI results can range from a minus 3.5 to a plus 3.5. Using this range there can be a difference of 7 pounds of feed consumed per day to achieve a comparable gain.

How important is RFI data? The economic relevance of RFI is significant. RFI is moderately heritable at .28-.44 comparable with other production traits. By selecting for feed efficiency various research documents an increase in carrying capacity of 10% or more and increased feedlot profitability of 10-15%. Imagine reducing feed costs by over 10% or running 10% more cattle on the same resources. However, selecting for RFI must be done as part of a balanced selection program as other traits such as disposition, calving ease, fertility, growth, milk and carcass also have significant economic relevance. Each producer or rancher must analyze their individual situations to determine what traits will be most beneficial to their bottom line.

How does Seedstock Plus factor in? Seedstock Plus has been RFI testing bulls since 2010. We embraced the importance of this data for our use as breeders and also to enhance the selection available to our customers. In the summer of 2013 we purchased and installed our own GrowSafe systems in MO and AZ. In the fall of 2015, we expanded the MO system. This will enable us to RFI test over 550 bulls and 200 females each year. Accelerating the amount of data generated to incorporate with all other data Seedstock Plus has been collecting such as DNA and ultrasound.

Reading the RFI test results.

Group: Denotes which group the bull was tested in. The RFI score of bulls from one group should not be compared to other groups as they are separate contemporary groups.

ADG: The average daily gain during the RFI test

ADG Ratio: Ratio with 100 being average, calculated per group for comparison.

RFI: the RFI value calculated from the bull's actual feed intake on test

RFI RANK: The RFI rank within each group with 1 being best.

RFI Rank is within each group						RFI DATA ON SALE BULLS						RFI Rank is within each group					
LOT #	Group	ADG	RATIO	RFI	RANK		LOT #	Group	ADG	RATIO	RFI	RANK					
175	1	4.66	107	-0.24	19		191	2	4.44	104	-1.72	9					
177	1	4.89	112	0.13	21		192	2	2.77	65	-0.93	13					
178	1	4.47	103	-2.01	7		193	1	5.01	115	-2.03	6					
179	1	3.87	89	-1.26	12		194	2	3.90	92	0.37	27					
186	2	4.40	103	-0.26	21		196	1	3.53	81	0.51	28					
187	2	3.64	85	-0.49	19		197	1	4.90	113	-2.20	5					
188	2	4.50	106	-0.57	17		204	1	4.80	110	1.39	33					
189	2	4.13	97	-7.52	1		205	2	3.91	92	-0.49	18					
190	2	3.61	85	-0.46	20		207	2	3.53	83	1.37	33					

Bull Warranty Program Insurance for your bull!

Several years ago, Seedstock Plus instituted an insurance program for new bull purchases in an effort to protect our customers from a catastrophic loss if something should happen to a bull within the first breeding season. This program covers any and all possible things that a bull can do to himself in the first six months of ownership. The warranty costs **5%** of the purchase price and should you have to use it, we try to either bring you a comparable replacement or find a suitable loaner bull to get the cows bred if you are still in the midst of breeding season. If something happens to him towards the end of the season, we still cover that but often will either take the bull back and issue a credit towards your next purchase or have you ship the bull, keep the salvage funds and issue a credit for the balance. Any way you look at it - we get you back even! We've warrantied bulls that have been hit by lightning, hit by trains, drowned, broken various body parts or been injured in such a way that he won't ever be sound to breed cows again.

There are very few affordable commercial insurance policies that will cover a bull for loss of use. Farm policies will cover 'acts of God' (so do we!) but again, an injury is just your tough luck. The **5%** of purchase price cost is a small price if something happens to your bull within that first 6 months!

We appreciate the fact that you've put your trust in us to present you with a bull that has a good disposition, good feet and legs and will breed cows - we feel those things should be 'on us' and you don't need insurance if you have a problem in one of these areas - you just need to let us know and we'll take care of it. We try to catch every possible problem prior to the sale but things happen and bulls are bulls.... But if your bull gets injured or dies, he needs to be insured! Take a good look at what the warranty can offer you and be sure to tell us at the settlement table that you want to insure your bull!

About Balancer® Bulls

The Profitable Blend of Angus and Gelbvieh Genetics!

Balancer hybrids offer a simple and powerful way to maintain hybrid vigor and the proper blend of British and Continental genetics in your cowherd without complicated crossbreeding systems. Registered Balancer hybrids combine the Angus advantages of calving ease, moderate mature size, marbling and convenience traits with Gelbvieh growth, muscle leanness, fertility and unequaled pounds of calf per cow exposed in a single animal. And, documented research proves that Balancer hybrids offer the same consistency as their purebred parents with improved uniformity of composition. Plus, Balancers are registered seedstock, complete with documented parentage and EPD's. Balancer bulls are registered as Gelbvieh and Angus or Red Angus hybrids with a minimum of 75% of the pedigree documented and with both the sire and the dam recorded with their respective association. There are also registered Hybrid bulls in this category, the difference being a varying percentage of Gelbvieh as well as a mixture of other breeds. These bulls can be used in a similar way as the Balancer bulls as long as the buyer is aware of the actual breed makeup as close as can be known.

Both the Balancer & Hybrid bulls' EPD's are figured on the Gelbvieh base and can be compared to the Gelbvieh bulls.

The average EPD's for Balancer bulls as of 9/28/2021 are:

CE: 13 BW: -0.5 WW: 69 YW: 106 Milk: 20 TM: 55 CEM: 7 ST: 14
DOC: 12 CW: 35 REA: .51 MB: .35 \$C: 99.47 FPI: 79.59 EPI: 111.51

Balancer	ND Red	Impressive 007H ET
JGPG	Impressive 007H ET	

DI.W INDUSTRY 301X
CTR IMPRESSIVE 5767C
CTR 7228T
LEACHMAN SAUGAHATCHEE 3000C
VER LEE ANN 963U ET
LWGR LEE ANN 79D 751G ET

REG #:	1501558
BD:	1/15/2020
BW:	ET
WW:	ET

CE	BW	WW	YW	MK	TM	CEM	ST	DOC	CW	REA	MB	\$C	FPI	EPI
9	3.5	76	107	25	63	3	10	10	37	1.12	.11	67.67	72.71	132.65
BREED PERCENTILE RANKING PER EPD														
90	>95	25	50	10	10	>95	95	85	40	1	>95	>95	90	30
Breed %		50GV 50AN					OWNER: IGP Gelbvieh							

Balancer ND Red Homo Polled
SKF **Dunn's Hot Money 143H**

EEC LCOC DENIRO A013Z
SLAC LEACHMAN SLAC MONEY A014B
RABS BROWN MS P707 Y7852
VWF ZEUS Z10
PRD DUNN'S MISS DEMETER 810F
SKF DUNN'S MISS RED SANDY 68

REG #:	1486972
BD:	1/31/2020
BW:	61
WW:	626

CE	BW	WW	YW	MK	TM	CEM	ST	DOC	CW	REA	MB	\$C	FPI	EPI
18	-4.7	63	90	24	55	10	19	12	20	.37	-0.03	117.75	72.62	74.81
BREED PERCENTILE RANKING PER EPD														
4	2	80	85	15	45	10	3	50	95	80	>95	15	90	90
Breed %		25GV 75AR				OWNER: Sandy Knoll Farm								

172

REG #:	1496435
BD:	2/2/2020
BW:	50
WW:	589

CE	BW	WW	YW	MK	TM	CEM	ST	DOC	CW	REA	MB	\$C	FPI	EPI
18	-3.9	54	83	22	49	11	20	8	6	.38	.22	128.81	73.10	43.66
BREED PERCENTILE RANKING PER EPD														
4	4	>95	95	30	80	3	1	>95	>95	80	80	4	85	>95
Breed %		75GV 25AR				OWNER: TGP Gelbvieh / Burbank Cattle Co.								

REG #:	1510287
BD:	2/18/2020
BW:	72
WW:	612

CE	BW	WW	YW	MK	TM	CEM	ST	DOC	CW	REA	MB	\$C	FPI	EPI
13	-2.0	68	94	18	52	6	16	9	25	.46	.35	106.46	80.07	118.73
Breed Percentile Ranking per EPD														
45	20	55	80	70	65	65	25	95	85	65	50	35	50	45
Breed %		74GV 23AN 3AR				OWNER: KZ Cattle Company								

REG #:	1487719
BD:	2/7/2020
BW:	61
WW:	586

CE	BW	WW	YW	MK	TM	CEM	ST	DOC	CW	REA	MB	\$C	FPI	EPI
17	-4.1	53	69	20	46	8	16	14	22	.36	.25	107.17	71.89	53.26
BREED PERCENTILE RANKING PER EPD														
10	3	>95	>95	50	95	30	25	15	90	80	75	35	90	>95
Breed %		70GV 25AR 5AN				OWNER:		JGP Gelbvieh						

REG #:	1472089
BD:	2/23/2020
BW:	74
WW:	526

CE	BW	WW	YW	MK	TM	CEM	ST	DOC	CW	REA	MB	\$C	FPI	EPI
14	-2.0	57	88	17	46	8	19	9	27	.40	.39		74.62	
Breed Percentile Ranking per EPD														
30	20	95	90	75	95	30	3	95	75	75	40		80	
Breed %		56GV 25AR 19AN				OWNER: Reinert Family Farm								

REG #:	1486982
BD:	2/10/2020
BW:	66
WW:	625

CE	BW	WW	YW	MK	TM	CEM	ST	DOC	CW	REA	MB	\$C	FPI	EPI
17	-4.3	61	91	28	59	11	11	11	23	.53	-0.05	82.13	71.35	41.92
BREED PERCENTILE RANKING PER EPD														
10	3	85	85	3	25	3	85	70	90	50	>95	90	90	>95
Breed % 50GV 50AR						OWNER: Sandy Knoll Farm								

REG #:	1510284
BD:	3/2/2020
BW:	76
WW:	579

CE	BW	WW	YW	MK	TM	CEM	ST	DOC	CW	REA	MB	\$C	FPI	EPI
6	0.6	65	91	18	51	4	18	16	32	.43	.18		68.28	
BREED PERCENTILE RANKING PER EPD														
>95	75	70	85	70	70	90	10	3	60	70	90		>95	
Breed %			35GV 50AR 15AN			OWNER: KZ Cattle Company								

All of the bulls in the Seedstock Plus Program are DNA tested to be able to provide the most accurate, DNA -Enhanced EPDs as part of our commitment to bring you the best data so you can make the most informed decision and get the best bull for your program. Let us know if you need any help understanding any of the data.

REG #:	1510602
BD:	3/3/2020
BW:	89
WW:	611

[illegible]

186
RFI

REG #:	1511690
BD:	3/23/2020
BW:	61
WW:	620

CE	BW	WW	YW	MK	TM	CEM	ST	DOC	CW	REA	MB	\$C	FPI	EPI
19	-1.5	68	96	22	56	11	9	11	25	.61	.37	73.47	82.52	29.23
BREED PERCENTILE RANKING PER EPD														
2	30	55	75	30	40	3	95	70	85	30	45	95	35	>95
Breed % 65GV 35AR						OWNER: Zimmerman Gelbvieh								

REG #:	1511712
BD:	4/7/2020
BW:	87
WW:	592

CE	BW	WW	YW	MK	TM	CEM	ST	DOC	CW	REA	MB	\$C	FPI	EPI
10	2.3	84	131	18	60	6	16	10	47	.72	.25	107.86	82.13	138.98
BREED PERCENTILE RANKING PER EPD														
85	95	5	10	70	20	65	25	85	15	15	75	35	35	25
Breed %		64GV 24AN 12AR				OWNER: Zimmerman Gelbvieh								



REG #:	1511703
BD:	4/1/2020
BW:	68
WW:	497

CE	BW	WW	YW	MK	TM	CEM	ST	DOC	CW	REA	MB	\$C	FPI	EPI
19	-4.5	42	56	22	43	11	16	9	1	.31	.34	100.25	69.00	-10.29
BREED PERCENTILE RANKING PER EPD														
2	2	>95	>95	30	>95	3	25	95	>95	90	50	55	>95	>95
Breed % 56GV 37AR 6XX						OWNER: Zimmerman Gelbvieh								



REG #:	1511752
BD:	4/7/2020
BW:	78
WW:	516

	CE	BW	WW	YW	MK	TM	CEM	ST	DOC	CW	REA	MB	\$C	FPI	EPI
	14	-3.4	50	63	14	39	8	20	13	3	.52	.13	126.96	65.63	-12.06
	BREED PERCENTILE RANKING PER EPD														
	30	10	>95	>95	90	>95	30	1	30	>95	50	95	5	>95	>95
	Breed % 68GV 21AR 11AN						OWNER: Zimmerman Gelbvich								



REG #:	1511706
BD:	4/3/2020
BW:	72
WW:	668

CE	BW	WW	YW	MK	TM	CEM	ST	DOC	CW	REA	MB	\$C	FPI	EPI
13	-2.3	60	100	22	55	8	18	10	39	.49	.29	118.67	77.75	116.06
BREED PERCENTILE RANKING PER EPD														
45	15	65	65	30	45	30	10	85	35	55	65	15	60	45
Breed %	54GV 26AR 20AN					OWNER: Zimmerman Gelbvieh								

REG #:	1511535
BD:	4/28/2020
BW:	76
WW:	564

CE	BW	WW	YW	MK	TM	CEM	ST	DOC	CW	REA	MB	\$C	FPI	EPI
12	-0.8	62	87	22	53	10	14	11	41	.42	.14	91.74	69.64	136.81
Breed Percentile Ranking per EPD														
60	40	80	90	30	60	10	50	70	25	70	95	75	95	25
Breed % 67GV 23AR 10AN						OWNER: Burns Gelbvieh								



REG #:	1511533
BD:	4/29/2020
BW:	78
WW:	531

CE	BW	WW	YW	MK	TM	CEM	ST	DOC	CW	REA	MB	\$C	FPI	EPI
11	1.9	68	105	20	53	7	13	10	33	.37	.06	91.61	68.13	121.88
BREED PERCENTILE RANKING PER EPD														
75	95	55	55	50	60	45	65	85	55	80	>95	75	>95	40
Breed % 50GV 37AR 13AN						OWNER: Burns Gelbvieh								

GELBVIEH BULLS

PB Gelbvieh Red (DC) Homo Polled **200**
JEB BCC Red Howie H009 ET

SPFR KANSAS GOVENOR 158Y
LDWI REDNECK 2D1
VWF MS WINNEY X2
DCSF POST ROCK TOP BRASS ET
RHRT MS TOP JEWEL ET
TWA JEWEL 44M ET

REG #:	1496331
BD:	3/12/2020
BW:	ET
WW:	ET

CE	BW	WW	YW	MK	TM	CEM	ST	DOC	CW	REA	MB	\$C	FPI	EPI
18	-2.3	53	87	24	51	11	18	8	20	.78	.11	123.50	69.21	20.04
Breed Percentile Ranking per EPD														
2	10	95	75	25	70	2	15	>95	90	35	80	20	80	>95
Breed % 99.9GV						OWNER: Burbank Cattle Company								

PB Gelbvieh ND Red Homo Polled **203**
SKF Dunn's Redneck 304H

SPFR KANSAS GOVENOR 158Y
LDWI REDNECK 2D1
VWF MS WINNEY X2
JEB BCC RED ZADE 31Z
SKF DUNN'S MISS ZADE 565C
SKF DUNNS MS COMMITMENT 101Y

REG #:	1486360
BD:	3/19/2020
BW:	72
WW:	561

CE	BW	WW	YW	MK	TM	CEM	ST	DOC	CW	REA	MB	\$C	FPI	EPI
20	-2.8	53	79	22	48	13	16	12	26	.76	.30	115.91	74.15	17.65
Breed Percentile Ranking per EPD														
1	4	95	90	40	85	1	40	45	65	40	20	35	50	>95
Breed %		87GV 13AR				OWNER: Sandy Knoll Farm								

PB Gelbvieh Red (DC) Homo Polled **201**
JEB BCC Red Hoover H011 ET

SPFR KANSAS GOVENOR 158Y
LDWT REDNECK 2D1
VWF MS WINNEY X2
DCSF POST ROCK TOP BRASS ET
RHRT MS TOP JEWEL ET
TWA JEWEL 44M ET

REG #:	1496332
BD:	3/12/2020
BW:	ET
WW:	ET

CE	BW	WW	YW	MK	TM	CEM	ST	DOC	CW	REA	MB	\$C	FPI	EPI
17	-1.9	46	70	24	47	10	17	10	22	.92	.11	116.19	63.98	3.46
BREED PERCENTILE RANKING PER EPD														
4	10	>95	>95	25	90	4	25	85	80	10	80	35	>95	>95
Breed % 99.9GV						OWNER: Burbank Cattle Company								

PB Gelbvieh ND Red Homo Polled **204**
VJQM VV's Hamm's Extra 90H **REL**

MILR TRAILS END B32
MILR TRAILS END D64
MILR MS NICOLE 101-18 ET
OZZ IDEAL LEGACY 56R
WGN LADY LEGACY 90U
OZZ FREE LADY 112K

REG #:	1494823
BD:	3/20/2020
BW:	77
WW:	636

CE	BW	WW	YW	MK	TM	CEM	ST	DOC	CW	REA	MB	\$C	FPI	EPI
13	-0.7	69	97	24	59	9	11	8	18	.45	.31	88.82	78.96	95.62
Breed Percentile Ranking per EPD														
35	30	40	50	25	25	10	95	>95	95	>95	20	90	20	20
Breed % 94GV 6AN						OWNER: Double V Farms								

PB Gelbvieh Red (DC) Homo Polled **202**
JEB BCC Red Henry H002 ET

SPFR KANSAS GOVENOR 158Y
LDWI REDNECK 2D1
VWF MS WINNEY X2
DCSF POST ROCK TOP BRASS ET
RHRT MS TOP JEWEL ET
TWA JEWEL 44M ET

REG #:	1496324
BD:	3/17/2020
BW:	ET
WW:	ET

CE	BW	WW	YW	MK	TM	CEM	ST	DOC	CW	REA	MB	\$C	FPI	EPI
17	-3.5	42	59	24	45	10	17	8	16	.83	.29	114.15	67.69	-8.54
Breed Percentile Ranking per EPD														
4	2	>95	>95	25	95	4	25	>95	95	25	25	40	90	>95
Breed % 99.9GV						OWNER: Burbank Cattle Company								

PB Gelbvieh ND Red Homo Polled **205**
SFGC Redroad 054H **REI**

SKF DUNNS DEUCE ALBERT 094D
GRRR GILLY'S BERT F847 (V)
GRRR GILLY'S SUNNYSINE B428
JNCC GDN FORTUNE HAWK 361A
SFGC MS RED WALKER 754E
SFGC MS WALKER 549C

REG #:	1510605
BD:	3/23/2020
BW:	87
WW:	617

CE	BW	WW	YW	MK	TM	CEM	ST	DOC	CW	REA	MB	\$C	FPI	EPI
10	1.2	71	106	17	53	5	17	13	39	.67	.04	116.26	70.06	114.54
BREED PERCENTILE RANKING PER EPD														
75	75	30	25	80	60	70	25	25	10	65	95	35	75	10
Breed %						88GV 12AR								
						OWNER: Sanders Farm								



PB Gelbvieh ND Red Homo Polled **206**
SKF Dunn's Red Warrior 340H

TMGR RAFTER M 3434A
DCH HILLE CONQUISTADOR C212
DCH HILLE T288 TERRA
HPL SKF QUIVIRA 8201S
SKF DUNN'S MISS QUIVIRA 4B21
SKF DUNN'S MS BACKTRACK 014X

REG #:	1487055
BD:	3/30/2020
BW:	89
WW:	674

CE	BW	WW	YW	MK	TM	CEM	ST	DOC	CW	REA	MB	\$C	FPI	EPI
16	-0.8	66	87	23	56	7	17	10	21	.91	.14	121.77	74.49	35.32
Breed Percentile Ranking per EPD														
10	30	55	75	30	40	35	25	85	85	10	70	25	45	95
Breed %		99.9GV				OWNER: Sandy Knoll Farm								

GELBVIEH BULLS

PB Gelbvieh ND Red Homo Polled **207**
VJQM VV's Zade's Trail 17H **RFI**

MILR TRAILS END B32
 MILR TRAILS END D64
 MILR MS NICOLE 101-18 ET
 JEB BCC RED ZADE 31Z
 JEB BCC MISS ZADE 77C
 JEB BCC MISS WINNIE 35Y

REG #:	1494831
BD:	4/9/2020
BW:	74
WW:	608

CE	BW	WW	YW	MK	TM	CEM	ST	DOC	CW	REA	MB	\$C	FPI	EPI
12	0.4	73	105	21	58	7	18	13	30	.58	.67	130.23	88.80	120.98
BREED PERCENTILE RANKING PER EPD														
50	60	25	30	50	30	35	15	25	45	85	1	10	1	10
Breed % 94GV 6AN OWNER: Double V Farms														

PB Gelbvieh ND Red Homo Polled **208**
SKF Dunn's Red Crusader 336H

LWHF UPGRADE 425X
 DCH HILLE DAKOTA CRUSADER C337
 DCH HILLE Y241
 TMGC SB GOOD BUSINESS 143B
 SKF DUNN'S MISS RED BUSINESS 7E11
 SKF DUNN'S MS XREGULATOR 043X

REG #:	1486367
BD:	4/10/2020
BW:	85
WW:	622

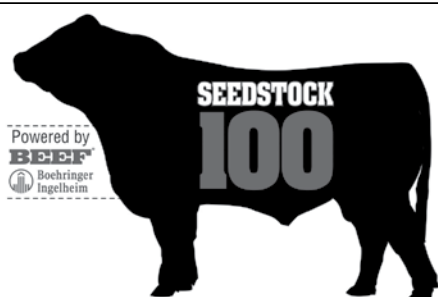
CE	BW	WW	YW	MK	TM	CEM	ST	DOC	CW	REA	MB	\$C	FPI	EPI
15	-1.5	61	97	23	54	10	18	14	27	.80	-0.01	132.63	68.74	80.32
BREED PERCENTILE RANKING PER EPD														
15	15	75	50	30	50	4	15	15	60	30	>95	10	85	35
Breed % 99.9GV OWNER: Sandy Knoll Farm														

PB Gelbvieh ND Red Polled **209**
BRNS 022H

ASCH JNCC RESOLUTE DIRECTIVE
 JNCC RED DIRECTIVE 367A
 JNCC RIKKI FORTUNE 09X
 BEA 301A
 SGRI C540
 SGRI Y174

REG #:	1511532
BD:	4/14/2020
BW:	86
WW:	581

CE	BW	WW	YW	MK	TM	CEM	ST	DOC	CW	REA	MB	\$C	FPI	EPI
7	3.2	95	142	18	65	3	20	12	41	.70	.11	134.29	83.67	115.50
BREED PERCENTILE RANKING PER EPD														
>95	>95	1	1	75	5	95	2	45	10	55	80	10	10	10
Breed % 86GV 14AR OWNER: Burns Gelbvieh														



Seedstock Plus is proud to once again be listed in the top 100 in bull sales by BEEF Magazine. Ranking # 17 on the list with over 900 bulls sold in the 2020 calendar year! We know bulls and we can certainly help you find one that is right for your program! Contact us if you need help in matching a bull to your needs!

FALL BREDS/PAIRS

Selling 1/2 Interest!



210

PB Gelbvieh ND Red Homo Polled **210**
JEB BCC Ms Arapahoe 901G ET

DCH HILLE X102
 DLW ARAPAHOE 207A
 DCSF POST ROCK RHONDA 207M2
 DCHD GOLDEN BUCKLE GELV 265A

REG #:	1465281
BD:	3/10/2019

GGRR GILLYS FLORA C515
 GGRR GILLYS FLO 256Z

CE	BW	WW	YW	MK	TM	CEM	ST	DOC	CW	REA	MB	\$C	FPI	EPI
9	-1.0	72	97	26	62	6	23	13	29	.84	.34	148.54	81.14	58.57
Breed % 99.9GV OWNER: Burbank Cattle Company														

SELLING 1/2 INTEREST! Buyer will be responsible for 1/2 of the expenses of maintenance, vet and related flushing costs. Buyer will receive half of the natural calves (after expenses - when sold) and 1/2 of the embryos collected. Or double the purchase price and take the whole female! BREEDING INFO: OPEN - Sells with a Balancer bull calf at side (JEB 10J AMGV1521284) born 9/13/21 BW: 70 Sire: JYJ Brown Redemption Y1334. Top 1% Stayability and \$C and top 10% Marbling! BW, WW & REA are all top 20%! She's easy to handle and very sound on her feet and legs! Tremendous udder quality and she's doing a great job with her bull calf at side! We are excited to welcome her to the donor pen!



211

Balancer ND Red Homo Polled **211**
JEB BCC Ms Cavalier 50G

BKT BECKTON CLIFFTOP Z00 E4
 BWF BRANDYWINE CAVALIER 597C
 BWF 023X
 MTB BCC PEDRO 6A
 JEB BCC MISS PEDRO 5D
 JEB BCC MISS RAMROD 33B

REG #:	1470380
BD:	10/6/2019

CE	BW	WW	YW	MK	TM	CEM	ST	DOC	CW	REA	MB	\$C	FPI	EPI
7	1.7	76	124	22	60	4	15	15	47	.46	.47	106.24	82.63	149.46
Breed % 55GV 36AR 9AN OWNER: Burbank Cattle Company														

BREEDING INFO: OPEN - Sells with a Balancer heifer calf at side (JEB 23J AMGV at side born 9/21/2021 BW: 65# Sired by RROG Over Game Day 443G ET AMGV1468746. Top 10% YW & top 15% WW! Her dam, her granddam and her great grand dam have all reached Dam of Merit status! Moderate framed Balancer female with a lot of depth and thickness. Beautiful udder with plenty of milk and she's doing a great job with her heifer calf!

SPRING BRED HEIFER

PB Gelbvieh ND Red Homo Polled
JEB BCC Ms Hoochie 069H

JMDS MOON SHINE

GGR GILLYS HOOCH C532

GGR GILLYS DOLLYGIRL A365

JEMG J BAR M B858 ET BART

DAMG FRANKIE BART 13F

HRRF 52U

REG #:	1496437
BD:	2/26/2020

CE	BW	WW	YW	MK	TM	CEM	ST	DOC	CW	REA	MB	\$C	FPI	EPI
12	1.0	74	112	16	53	7	15	13	35	.82	.00		72.21	
Breed % 95GV 5AN OWNER: JGP Gelbvieh / Burbank Cattle Co.														

BREEDING INFO: AI: 5/3/21 to LDWI Redneck 2D1 AMGV1348800

PE: 6/9 - 8/5/21 to GSRT Deacon 908D AMGV1371487

Her dam weaned her off at a 103 WW ratio after starting at just a 68# BW! She has a top 20% WW & 15% YW performance EPDs! Her granddam, 52U achieved Dam of Distinction status having raised 10 calves with a WW ratio of 104. She's attractive and clean fronted with some natural depth and thickness! As a Purebred, she brings a lot of breeding options to the table!



OPEN HEIFERS

Balancer ND Red Polled
BRLW Ms Belle 39BH

HAD THE JUDGE ET

BNC REDWOOD D653

BNC MS HOJER Z254

CIRS 12LW ET

KKKG TRIPLE K BELLE

AHL MAGBELL 39S

REG #:	1486857
BD:	8/1/2020

CE	BW	WW	YW	MK	TM	CEM	ST	DOC	CW	REA	MB	\$C	FPI	EPI
13	-2.4	51	67	20	46	8	15	14	17	.58	.25	99.17	68.34	30.52
Breed % 75GV 12AN 13AR OWNER: Burbank Cattle Company														

BREEDING INFO: SELLS OPEN

Outcross Balancer genetics in a strong age heifer! She has so much natural capacity and spring of rib - she'll be one of those cows that can easily maintain herself while raising a big calf! She'll work in a lot of programs!

Her GE-EPDs are pending and will be available sale day!



PB Gelbvieh Red* Double Polled*
BRLW Ms Rogue 2H

JDPD ASTRO 407S

HFGC HF MARSHALL 173B12

HFGC MISS VICKIE 173X23

DVE DAVIDSON CAMPBELL 73B

THUL MS ROGUE F827

THUL Z204

REG #:	1488083
BD:	8/20/2020

CE	BW	WW	YW	MK	TM	CEM	ST	DOC	CW	REA	MB	\$C	FPI	EPI
11	3.2	72	101	24	60	6	14	9	37	.88	.05		69.46	
Breed % 99.9GV OWNER: Burbank Cattle Company														

BREEDING INFO: SELLS OPEN

Excellent performance on this August born heifer! Her adjusted 205 WW was 631 off her first calf heifer dam! Top 25% WW EPD and 25% Milk back that up! Her coat color, polled status and GE-EPDs are pending and will be available sale day!



OPEN HEIFERS

Balancer Red* Homo Polled
BRLW Ms Field Day 61H

HAD THE JUDGE ET

BNC REDWOOD D653
BNC MS HOJER Z254
CRAN 095 ET

DLW MS FIELD DAY 6110D OF 258
DLW MS POWER 258Z OF 903

REG #:	1488082
BD:	8/20/2020

CE	BW	WW	YW	MK	TM	CEM	ST	DOC	CW	REA	MB	\$C	FPI	EPI
12	0.0	64	96	23	55	8	16	16	34	.65	.14	99.82	71.16	67.96
Breed %		66GV 22AR 12AN		OWNER: Burbank Cattle Company										

BREEDING INFO: SELLS OPEN

Weaning weight ratio of 104 on this fancy Balancer heifer! With a top 20% Milk EPD and top 25% Stayability - she's got mama cow written all over her! Coat color & GE-EPDs are pending and will be available sale day!

215



PB Gelbvieh Red* Double Polled*
BRLW Ms Nugget 34H

HAD THE JUDGE ET

BNC REDWOOD D653
BNC MS HOJER Z254
HFGC THOR 173A19

HFGC MS NUGGET 34C44
HFGC MISS NUGGET 34X35

REG #:	1488203
BD:	8/23/2020

CE	BW	WW	YW	MK	TM	CEM	ST	DOC	CW	REA	MB	\$C	FPI	EPI
12	0.0	54	78	20	47	8	14	6	21	.53	.20	88.25	65.76	43.72
Breed %		88GV 12AN		OWNER: Burbank Cattle Company										

BREEDING INFO: SELLS OPEN

The Nugget cow family has been a staple at Hart Farms for many years. Exceptional udders and maternal traits will keep this Purebred heifer working in any program for years to come! Her coat color, polled status and GE-EPDs are pending and will be available sale day!

216



Balancer ND Red Homo Polled
LAW Mark Enpyness 037H

TMGC SB GOOD BUSINESS 143B

SKF DUNN'S REGULAR BUSINESS 149F
SKF DUNN'S MISS GOVENOR 136Y
RABS BROWN PARAMOUNT X7879

LAW MARK ENPARA 5002C
LAW MARK ENDAMA 3001A

REG #:	1494375
BD:	9/6/2020

CE	BW	WW	YW	MK	TM	CEM	ST	DOC	CW	REA	MB	\$C	FPI	EPI
10	-2.0	66	100	21	54	7	17	11	28	.25	.39	114.86	79.33	63.41
Breed %		59GV 30AR 11AN		OWNER: Lawman Farms										

BREEDING INFO: SELLS OPEN

Top 20% BW & \$Cow EPDs! Excellent Stayability as well as top 15%! Traits that will keep her in the herd for many years!

217

Balancer ND Red Homo Polled
LAW Mark Weviness 053H

TMGC SB GOOD BUSINESS 143B

SKF DUNN'S REGULAR BUSINESS 149F
SKF DUNN'S MISS GOVENOR 136Y
EGL CONTINENTAL C034

LAW MARK WEVENTAL 7075E
LAW MARK WEVEGGE 4097B

REG #:	1494383
BD:	9/14/2020

CE	BW	WW	YW	MK	TM	CEM	ST	DOC	CW	REA	MB	\$C	FPI	EPI
11	-0.8	65	97	18	51	7	16	10	16	.44	.39	115.45	77.70	77.59
Breed %		75GV 19AN 6AR		OWNER: Lawman Farms										

BREEDING INFO: SELLS OPEN

Outcross pedigree for Red (because she has 2 black parents) and the 75% Gelbvieh Balancers are always popular as mother cows!

218

OPEN HEIFERS

PB Gelbvieh Red* Double Polled* **219**

ASCH JNCC RESOLUTE DIRECTIVE
JNCC RED DIRECTIVE 367A
JNCC RIKKI FORTUNE 09X
BWF BRANDYWINE WINTHROP 957W
DRGF 112Y
SNB VISION

REG #:	1515050
BD:	9/10/2020

CE	BW	WW	YW	MK	TM	CEM	ST	DOC	CW	REA	MB	\$C	FPI	EPI
12	0.2	88	126	22	65	6	18	10	34	.67	-0.02	124.88	80.59	96.37
Breed % 99.9GV OWNER: Duck River Gelbvieh														

BREEDING INFO: SELLS OPEN

Take advantage of a rare opportunity to own a daughter of a Dam of Distinction who has raised 8 calves with a 104 WW Ratio and is still active in the herd! Excellent performance numbers with a top 1% WW & top 3% YW EPDs!! Her coat color, polled status and GE-EPDs are pending and will be available sale day!

JNCC Red Directive 367A - Sire of LOTS 219, 220 & 221
Semen is available thru Seedstock Plus Genetics!!



PB Gelbvieh ND Red Double Polled* **220**

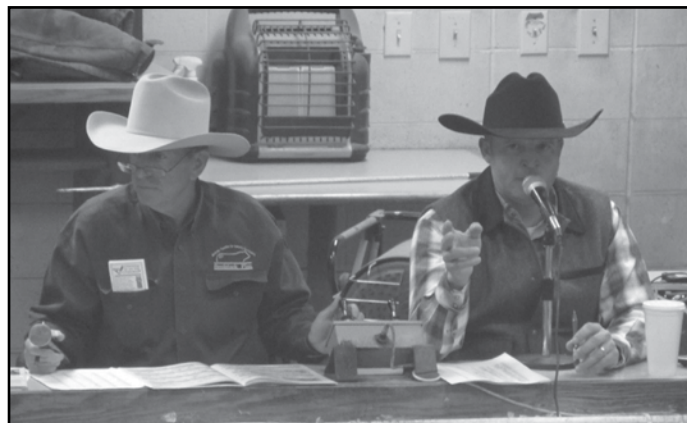
ASCH JNCC RESOLUTE DIRECTIVE
JNCC RED DIRECTIVE 367A
JNCC RIKKI FORTUNE 09X
CJSD 1860B
NNR 33 RED ROCK
NNR POST BLACK FACE

REG #:	1515083
BD:	9/25/2020

CE	BW	WW	YW	MK	TM	CEM	ST	DOC	CW	REA	MB	\$C	FPI	EPI
10	1.3	84	124	19	62	4	18	14	40	.75	.13	122.03	80.30	89.70
Breed % 83GV 17AN OWNER: Duck River Gelbvieh														

BREEDING INFO: SELLS OPEN

So far, her dam has only raised heifers so we are keeping two and sharing this fancy Purebred with you! Outstanding performance EPDs with a WW of top 2% and YW of top 3%! She's in the top 10% for Stayability and Carcass Weight and top 15% for TM, Docility & FPI! Very nicely rounded profile! Her polled status and GE-EPDs are pending and will be available sale day!



Balancer Red* Homo Polled **221**

ASCH JNCC RESOLUTE DIRECTIVE
JNCC RED DIRECTIVE 367A
JNCC RIKKI FORTUNE 09X
BWF BRANDYWINE CAVALIER 597C
JEB BCC MS CAVALIER 30E
JEB BCC MISS FLATIRON 31B

REG #:	1515081
BD:	12/1/2020

CE	BW	WW	YW	MK	TM	CEM	ST	DOC	CW	REA	MB	\$C	FPI	EPI
12	1.9	96	147	25	73	7	16	12	54	.69	.03	116.72	85.44	143.05
Breed % 75GV 25AR OWNER: Duck River Gelbvieh														

BREEDING INFO: SELLS OPEN

With Red Directive, Cavalier and Flat Iron all in her pedigree up close - you know she has performance built in and her adjusted weaning weight of 732# backs that up! Her top 1% WW, YW & TM EPDs do also! Her coat color & GE-EPDs are pending and will be available sale day!

Keep Your Mind in the Market

Volatile commodity markets and the speed at which narrow windows of opportunity to manage risk open and close underscore the value of keeping your mind engaged in the market, no matter how frequently you trade cattle.

That's why Seedstock Plus continues to offer as a free service to its customers and members a complimentary subscription to the daily Cattle Current electronic newsletter. It offers a convenient snapshot of the previous day's cash and futures markets for calves, feeders, fed cattle and related commodities. You'll also find pertinent market-related news.

If you're not receiving Cattle Current, or if you'd like to receive it at more than one e-mail address, please let us know and we'll add you to the list. You can send your request to wes@cattlecurrent.com.

THE FOLLOWING LOTS ARE UNREGISTERED, COMMERCIAL, REPLACEMENT QUALITY FEMALES FROM SOME OF OUR SEEDSTOCK PLUS BREEDERS AND CUSTOMERS. ALL THE WORK IS DONE! THESE ARE TREMENDOUS GROUPS OF BLACK BALANCER AND GELBVIEH INFLUENCE FEMALES!

COMMERCIAL LATE FALL BREDS

SANDERS FARM
CODY SANDERS
785-248-3202

3 - 5 YEAR OLD FALL BRED COWS DUE 11/16 - 12/10
BRED TO SFGC 744E AMGV1385108 (RED / HOMO
POLLED PB GELBVIEH BULL)

SPRING BRED HEIFERS

BRADBURY FARMS
TAYLOR BRADBURY
502-817-4421

3 BALANCER TYPE BRED HEIFERS
BRED TO CALVING EASE PB GELBVIEH BULL
SKF 122H AMGV1486963

FALL BORN OPEN HEIFERS

FOX FARMS
JOHN FOX
417-276-1644

4 - BALANCER TYPE OPEN HEIFERS

WITT CATTLE COMPANY
L.D. WITT
479-806-6511

7 - BALANCER TYPE OPEN HEIFERS



Red or Black, Purebred or Balancer - we have what you need!

‘Cavalier’



‘Saguaro’



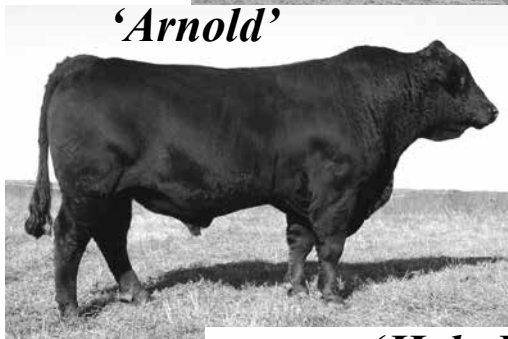
‘Stock Options’



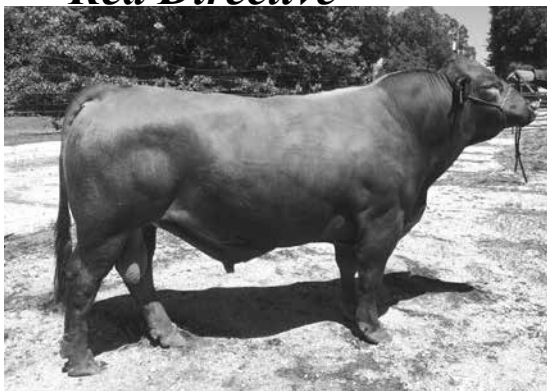
‘Redneck’



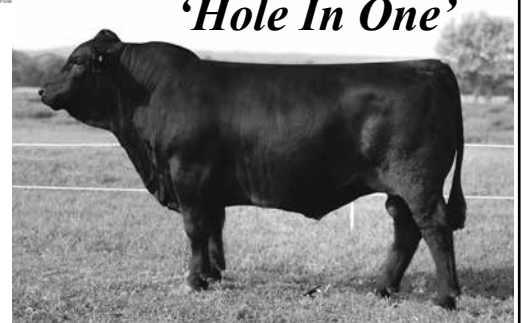
‘Arnold’



‘Red Directive’



‘Hole In One’



www.seedstockplusgenetics.com

***CHECK OUT THE
NEW WEBSITE !***



Contact: Matt Burbank 660-734-2739
or Seedstock Plus toll free: 877-486-1160

Terms & Conditions

Terms: Terms of the sale are cash or personal check unless satisfactory credit arrangements have been made with the seller previous to the sale.

Bidding: All animals sell to the highest bidder. Any disputes or challenges regarding bids shall be settled by the auctioneer and his decision shall be final. Mailed or telephoned bids will be handled with the strictest confidence.

Registrations & Transfers: Each animal which is offered and sold has a certificate of registry available at the time of sale. The seller is responsible for the proper transfer of the certificate to the purchaser including full payment of transfer fees.

Purchaser's Risk: Each animal becomes the property of and therefore is also the risk of the purchaser as soon as it is sold.

Announcements: Any errors or changes in information contained in the catalog will be announced from the auction block. Such announcements shall take precedence over information contained herein.

Rights and Obligations: The above terms and conditions of sale constitute a contract between the buyer and seller of each animal and shall be equally binding to both. Animals resold following purchase in this sale shall constitute a separate transaction and the rights and obligations of the parties connected thereto are not covered by the above terms and conditions of this sale. Neither the host farm, auctioneers, nor any other person connected with the management or conduct of this sale assumes any liability, legal or otherwise, except as set forth above.

DEFINITIONS AND GUARANTEES

HORNED: An animal with a horn growth affixed to the skull that has or has not been removed.

POLLED/SCURRED: An animal with rudimentary horn growth that will not develop into a horn. The rudimentary horn growth may or may not become affixed to the skull at an older age.

POLLED: An animal with absence of horn growth (An animal can have scurs and still be genetically polled)

DOUBLE POLLED: An animal whose sire and dam are both polled or scurred, this gives this animal the possibility of being homozygous polled for the polled trait but it is not yet proven so.

HOMOZYGOUS POLLED: An animal who carries two polled genes, and will produce polled or polled/scurred offspring with every mating.

DILUTER GENE: A gene carried by some Gelbvieh cattle that affects the degree of red color in the hair coat. Bulls carrying this gene can produce gray calves when mated to black cows or cream colored calves when mated to each other.

DILUTER FREE: All Red Angus are free of the diluter gene as are all red Gelbvieh cattle resulting from a double black mating. Red Gelbviehs can also be proven diluter-free by mating to black cows and producing all red or black offspring

DOUBLE BLACK: An animal whose sire and dam are both black, which give the animal the possibility of being homozygous for the black trait but its not yet proven so.

HOMOZYGOUS BLACK: An animal who carries two black genes and has been proven by mating or genetically tested to produce black or black factor (gray when mated with diluter-based genetics) calves with every mating.

**For more information contact: Seedstock Plus Toll Free at:
877-486-1160 or John on his cell: 660-734-1165
or visit the website: www.seedstockplus.com**

Seedstock Plus Sale Calendar

North Missouri Bull Sale

February 26, 2022

Kingsville Livestock, Kingsville, MO

Arkansas Bull & Female Sale

March 5, 2022

Hope Livestock, Hope, AR

Red Reward Bull & Female Sale

March 12, 2022

Wheeler Livestock, Osceola, MO

South Missouri Bull & Female Sale

March 26, 2022

*Joplin Regional Stockyards
Carthage, MO*



Working Together for Industry Excellence



Seedstock Plus

FIRST CLASS MAIL

